

# LightValet Feature Description



LightValet Interface modules are microprocessor based smart lamp controllers which can independently be programmed to manage and monitor lamps. LightValet has been meticulously designed & powerfully engineered to be very easy to use and configure. Virtually all available lamp technologies are fully supported and the LightValet can scale back to a single lamp and still 100% function with all its capabilities.

• **LED Operation** - LightValet Interface modules can control a whole myriad of available LED technologies. LED lamps can be dimmed via the LightValet 0-10vdc dimming option. LED lamps can be turned on and off through 100v-270vac relay switching. LightValet can control a single LED lamp or group of lamps.

• **CFL Operation** - LightValet Interface modules can control legacy and current compact Fluorescent(CFL) technologies. CFL lamps can be turned on and off through 100vac-270vac relay switching. CFL lamps can be dimmed via the LightValet 0-10vdc dimming option with the appropriate dimmable ballast installed. LightValet can control a single CFL lamp or group of CFL lamps.

• **Plasma Operation** – LightValet Interface modules can control the whole myriad of different Plasma(LEP) technologies. LEP lamps can be dimmed via the LightValet serial interface connection or through industry standard 0-10vdc dimming option. LEP lamps can also be turned on and off through supported serial interface. The LEP driver will provide 5-12vdc for the interface board operation.

• **Induction Operation** – LightValet Interface modules are designed to control all aspects of Induction lamp technology. Induction technology can be turned on and off through 100v-270vac relay switching. CFL lamps can be dimmed via the LightValet 0-10vdc dimming option and the appropriate dimmable ballast installed. LightValet can control a single induction lamp or a small group of lamps.

## Hardware Supported Features

- 0-10vdc Dimming
- Serial Dimming
- Daylight Harvesting
- Motion Detection
- 100vac-270vac relay switching
- 480vac relay switching
- 2- separate LED Lightbar support
- location buzzer
- Single LED Status
- Battery backed clock 24/7
- Digital Temperature/Humidity
- Wireless 802.154 Networking
- Wired RS485 Network

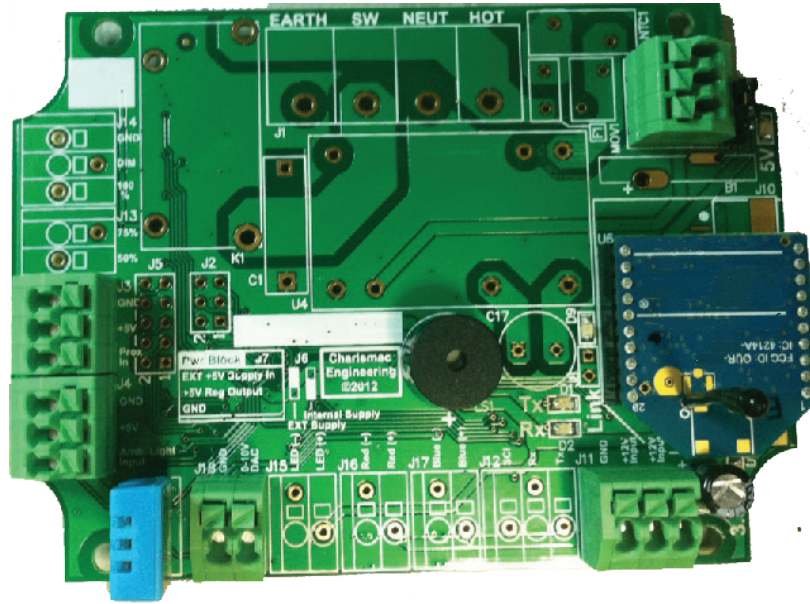


“Energy Management & Monitoring Solutions”

**CharisMac Engineering, Inc. | [www.charismac.com/instrument](http://www.charismac.com/instrument) | 530-885-4420**



# LightValet Interface Specifications



## Description

LightValet interface boards are low powered computers used in conjunction with a LightValet control module for managing and controlling interior or exterior lighting. Light characteristics can be instantly be programmed or monitored from anywhere in the world. The LightValet series manages single light timers, zone timers, dimming light levels, motion/proximity and daylight harvesting.

## Mounting

The LightValet interface board is suitable for mounting inside or outside a lamp fixture. An optional watertight case is also available. OEM licensing is available for integrators to create a custom design and then incorporate inside a lamp fixture. A commercial industry standard 4 gang electrical enclosure with a 3/4" conduit entypoint is also available for use in a hidden environment.

## Specifications

Supply Voltage external	+5 VDC ±10%
Output Signal	0–20mA
Linearity	±5%
Power Consumption	1.5W
Temperature Range	40° to 120° F
Switching Relay (Amps)	20 Amps
Wireless	802.154
Wired	RS485 Serial, terminated
Motion Sensor	PIR(3 wire config)
Dimming control	0-10vdc

## Wiring

Wired configurations require use of Cat-6 Ethernet style cable. Each LightValet interface board is daisy chained to each other back to the LightValet main controller. The maximum wire length from each interface module is 250 feet. Wireless or Wired connections will be automatically discovered, saved and configured at power on of the main controller.



“Energy Management & Monitoring Solutions”  
**CharisMac Engineering, Inc. | [www.charismac.com/instrument](http://www.charismac.com/instrument) | 530-885-4420**

